

TUESDAY
OCT 17

BIDDING STARTS
AT 9AM MT

HEAVY TRUCK & EQUIPMENT AUCTION

VERNAL, UTAH @ 9AM MT

**ON-SITE
& ONLINE
BIDDING**

INSPECTION DATES:

Friday, Oct 13 & Saturday, Oct 14 | 9AM - 4PM MT

1170 East Main St, Vernal, Utah 84078

Bidding provided by: **proxibid** **Equipmentfacts**

M
MIDEAST
EQUIPMENT AUCTIONS

Loaders
Excavators
Dozers
Graders
Water Trucks
Trailers
Screeners
Utility Trucks
Pickup Trucks
Dump Trucks
Air Compressors
Fuel Tanks
Generators
Tire Chains
Bumpers
Boats
Gin Trucks
Wire Line Trucks
Work Over Rigs
Swab Rigs
Winch Trucks
& Much More!



Register Online at MideastEquip.com | 860-222-3393 | Ask About Our Auction Services



CAT LOADER 980G WHEEL LOADER

SN 2KR03470; Hours: 33,708



CAT 980G WHEEL LOADER

SN 2KR02487; Hours 4998.6



CAT 980C WHEEL LOADER

SN 63X05334



KOMATSU WA380-7 WHEEL LOADER

6,432 Hours; SN 10236



CASE 621B WHEEL LOADER



CAT D8R DOZER WITH MULTI SHANK RIPPER

Excellent runner, highly maintained; SN 7XM00652



CAT D8R SINGLE SHANK RIPPER C9

Hours 4884; SN 7XM00809



CAT D8N DOZER U-BLADE MULTI SHANK RIPPER

Excellent Runner, Highly Maintained; SN 9TC3252



CAT D6T DOZER WITH MULTI SHANK RIPPER

Excellent Runner, 7,110 Hours; SN WRN00567



DEERE 672GP MOTOR GRADER WITH REAR RIPPER

8,477 Hours; SN KEF660121



VOLVO G730B MOTOR GRADER WITH REAR RIPPER

SN X037661X



DOOSAN DX225LC-5 HYDRAULIC EXCAVATOR

3,076 Hours; SN JJ0002170



HITACHI EX 330LC-5 EXCAVATOR

SN 1H1P020899; Hours 4585



BOBCAT E50 MINI EXCAVATOR

473 Hours; SN B4GP14308



2005 BOBCAT SKID STEER 963G

2,500 Hours; SN 562215195



2000 W900 KENWORTH DUMP TRUCK

Vin# 1NKWGGG60YR870220; Miles 504,590



1992 PETERBILT 378 DUMP TRUCK

Vin# 1XPFD9X0NN313116; 819,796 Miles; 9100 Hrs; Eaton Fuller Roadranger; 8 Speed; 3406 CAT Engine



1984 KENWORTH W900 TRUCK

Year: 1984; Make: Kenworth; Model: W900; Vehicle Type: Truck; Mileage: 201,867; Drive Line: 6x4 Engine Type: L6, 14.0L (855 CID); Fuel Type: Diesel Horsepower: Transmission: VIN #: 1NKWL29X0ES319292



1992 PETERBILT 378 TRUCK

Year: 1992; Make: Peterbilt; Model: 378; Vehicle; Type: Truck; Mileage: 829,305; Drive Line: 6x4; Engine Type: L6, 14.6L (893 CID) Fuel Type: Diesel; VIN #: 1XPFD9X9NN313115



KENWORTH GIN TRUCK



2007 KENWORTH C500 TRUCK

Year: 2007; Make: Kenworth; Model: C500; Vehicle Type: Winch Truck; Drive Line: 6x4; Engine Type: L6, 14.9L; Turbo Fuel Type: Diesel; VIN #: 1NKCL4TX27R139524



PETERBILT WINCH TRUCK



2014 WORKOVER RIG



2009 WORKOVER RIG TAYLOR 500



2008 WORKOVER RIG



SWAB RIG



1999 MACK CH613 TRUCK

Year: 1999; Make: Mack; Model: CH613; Vehicle Type: Wireline Truck; Mileage: 213,486; Engine Type: L6, 11.9L (728 CID); Fuel Type: Diesel; Horsepower: 400HP (298kW); VIN #: 1M1AA14Y9XW110480



1992 INTERNATIONAL 8100 TRUCK

Year: 1992; Make: International; Model: 8100; Vehicle Type: Wireline Truck; Drive Line: 4x2; Engine Type: L6, 10.0L (611 CID); Fuel Type: Diesel; VIN #: 1HTHBAYN3NH412833



2019 PETERBILT



2007 KENWORTH TRACTOR



1997 KENWORTH W900 TRUCK

Year: 1997; Make: Kenworth; Model: W900; Vehicle Type: Truck;
Mileage: 172,514; Engine Type: L6, 14.6L (893 CID); Fuel Type: Diesel;
VIN #: 1XKWPB0X5VR733036



KENWORTH DAY CAB



KENWORTH



FREIGHTLINER BED TRUCK



1990 PETERBILT 379 TRUCK

Year: 1990; Make: Peterbilt; Model: 379; Vehicle Type: Water Truck
Mileage: Plate: Body Type: Trim Level: Drive Line: 6x4 Engine Type: L6,
14.6L (893 CID) Fuel Type: Diesel Horsepower: Transmission: VIN #:
1XP5DB9X3LD286718



1994 MACK RD690S TRUCK

Year: 1994; Make: Mack; Model: RD690S; Vehicle Type: Truck; Engine
Type: L6, 11.9L (728 CID); Fuel Type: Diesel; Horsepower: 300HP
(224kW); VIN #: 1M2P264C7RM015791



KENWORTH CEMENT TRUCK



2015 FREIGHTLINER 108SD TRUCK

Year: 2015; Make: Freightliner; Model: 108SD; Vehicle Type: Cement Truck; Drive Line: 6x4; Engine Type: L6, 8.9L; Fuel Type: Diesel; VIN #: 1FVHG5CYXFHGH3775



FORD L 9000 WATER TRUCK



1997 FORD F800 TRUCK

Engine Type: L6, 5.9L (359 CID) Fuel Type: Diesel; Horsepower: 160-230HP; VIN #: 1FDNF80C7VVA24685



2007 FORD F-150



91 2 AXLE BELLY DUMP RANCHO



TILT DECK TRAILER



BELLY DUMP PUP



BELLY DUMP PUP



BELLY DUMP PUP



BELLY DUMP PUP



BELLY DUMP



BELLY DUMP PUP



BELLY DUMP PUP



BELLY DUMP PUP



BELLY DUMP



BELLY DUMP



BELLY DUMP



CAT GENERATOR



CEMENT MIXER



WATER TRANSFER PUMP



TRAILER LIGHT TESTER



5 TON CRANE HOIST



LARGE BAND SAW



LARGE BAND SAW



2 SUMP PUMPS



OIL FILLING STATION



OLD HAY RAKE



SPEED RADAR TRAILER



SPEED RADAR TRAILER



CONCRETE SAW



PURE-AIRE PS II REFRIGERATED AIR DRYER



GREASE GUN WITH TANK



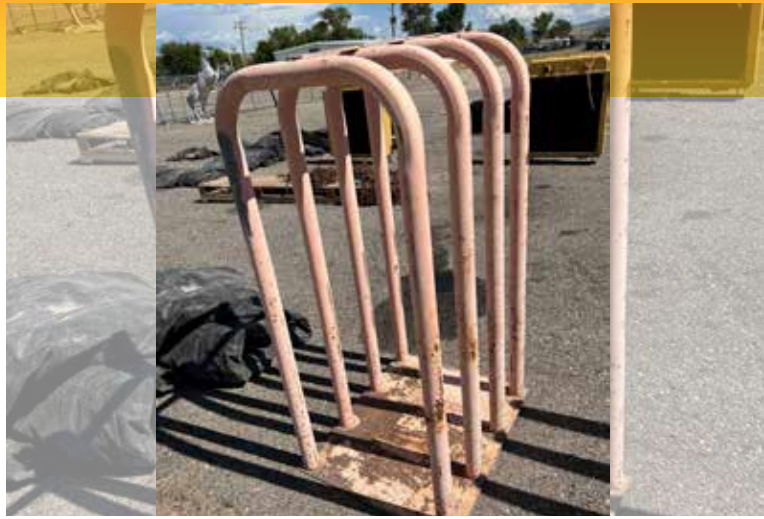
**CHEVY SILVERADO 8 FT RHINO LINED BED
(BRAND NEW)**



DODGE RAM 8FT PICK UP BED (BRAND NEW)



CASE IH 8725 CORN CHOPPER



TIRE CAGES (2)



PALLETS OF TIRE CHAINS (17)



ALUMINUM GRILL GUARD BUMPERS (16+)



CHROME BUMPERS (30+)



2019 GATOR GOOSENECK TRAILER

2019 40' Gator Gooseneck Trailer Deck is in excellent shape. Air ride with air bags. Has an electric air pump to fill air bags.



2005 MAY GOOSENECK TRAILER

40' long trailer



1000 GAL USED OIL TANK



6 TON KONE CRANES OVERHEAD LIFT



500 GALLON FUEL TANK



3 METAL GATES



80 BBL MUD TANK



KENTUCKY DRY VAN TRAILERS (2)

One is insulated with 2 separate rooms and doors; One is insulated with three framed rooms.

TUESDAY
OCT 17

BIDDING STARTS
AT 9AM MT

HEAVY TRUCK & EQUIPMENT AUCTION

VERNAL, UTAH @ 9AM MT



MORE ITEMS NOT SHOWN HERE:

- Air Compressors (6)
- Tractor Fuel Tanks (5)
- Large Tractor Tarps (21)
- CAT Pipelayer
- Large Intercooler Radiator CAT (2)
- VOLVO Grader JJ
- DEERE Excavator Bruce
- Vacuum Sewage Truck
- 2011 Ford F350
- 2006 Ford F250
- Boats (2)
- Flatbed Trailers (2)
- Water Trailer Pup
- 40' Float Trailer
- 2 Axle RGN
- Pallet of Aluminum Steps
- Pallet of Chain Holders
- Pallet of Whip Checks
- Pallet of Tractor Lights and Inserts
- Misc. CAT Pakar Cummins Oil Filters
- Transmission Lift
- Mud Tanks
- Aluminum & Steel Wheels (8+)
- And More Items Added Daily!

INSPECTION DATES:

Friday, Oct 13 & Saturday, Oct 14 | 9AM - 4PM MT

1170 East Main St, Vernal, Utah 84078

Bidding provided by: **proxibid** **Equipmentfacts**

M
MIDEAST
EQUIPMENT AUCTIONS

Register Online at MideastEquip.com | 860-222-3393 | Ask About Our Auction Services

TERMS & CONDITIONS



Internet Premium: 10.00%

Sales Tax : 6.95% - Sales tax applied to invoice total, including Internet Premium.

Participation Requirements: Valid Credit Card required for bidding approval.

Payment Options: Visa, MasterCard, Discover, American Express, Check, and Wire Transfer

Payment Instructions: Payment is due within 3 days of the close of the auction – wire transfer, credit card and “Good Company Check” accompanied by current “Bank Letter of Guarantee”, made payable to “Mideast Equipment Auctions”. Everything Sells “AS IS, WHERE IS.” The following charges will apply on all purchases. Please note that credit card payments and “good company checks” will have an additional 4% administrative fee added to the invoice total. THERE WILL BE A MAXIMUM CHARGE OF \$2,500.00 ON CREDIT CARD TRANSACTIONS.

No equipment will be released until payment is made in full. Everything Sells “As Is, Where Is” with no warranties implied or expressed.

ALL ITEMS WILL BE SUBJECT TO AN 8% BUYERS PREMIUM AND A 2% INTERNET PLATFORM FEE, ALL SALES ARE FINAL.

Payment is due within 3 days of the close of the auction. No equipment will be released until payment is made in full. All equipment is sold “As Is, Where Is” with no guarantees implied or expressed. Year models, hour meter readings and descriptions are known to be accurate to the best of our knowledge with no guarantee implied or expressed. Inspection prior to bidding is recommended and usually available prior to auction – please call to set up an appointment. Buyer is responsible for all freight, handling costs, and taxes where applicable. All sales are final. Call with any questions regarding this auction before placing a bid.

Items picked up in, or delivered to the state of UT will be subject to UT State and Local Sales Tax of 6.95%.

THIS LISTING ALONG WITH BROCHURES, CATALOGS AND ADVERTISING ARE ONLY A GUIDE AND MAY NOT BE ACCURATE IN ANY WAY. EVERY ITEM WILL SELL “AS IS” “WHERE IS”. PLEASE INSPECT THE EQUIPMENT PRIOR TO BIDDING. ALL SALES ARE FINAL.

All property is sold “AS IS”, “WHERE IS” and ALL SALES ARE FINAL. Property is open to thorough public inspection. It is the Bidder’s responsibility to determine condition, age, genuineness, value or any other determinative factor. Mideast Equipment Auctions may attempt to describe the merchandise in advertising, on the Internet and at the auction but makes no representations. In no event shall Mideast Equipment Auctions be held responsible for having made or implied any warranty of merchantability or fitness for a particular purpose. Bidder shall be the sole judge of value.

Bidders who bid from off site and are not present at the live auction or preview understand and acknowledge that they may not be able to inspect an item as well as if they examined it in person. It is the Bidder’s responsibility to determine condition, age, genuineness, value or any other determinative factor. Mideast Equipment Auctions shall endeavor to describe in detail each item and any pertinent information about it. Mideast Equipment Auctions will not be responsible for any errors or omissions in the description of the merchandise unless it is a material and intentional misrepresentation of the item itself. Bidder agrees that everything is sold as is and that they may not return any item they purchase.

Every person at the Auction site before, during and after the auction sale shall be deemed to be there at his own risk with notice of the condition of the premises, the activities on the premises, and the conduct of the third parties and the Bidder shall advise his agents and employees.

Mideast Equipment Auctions is providing Internet pre-auction and live/ virtual bidding as a service to Bidder. Bidder acknowledges and understands that this service may or may not function correctly the day of the auction. Under no circumstances shall Bidder have any kind of claim against Mideast Equipment Auctions or anyone else if the Internet service fails to work correctly before or during the live auction. Mideast Equipment Auctions will not be responsible for any missed bids from any source. Internet bidders who desire to make certain their bid is acknowledged should use the proxy-bidding feature and leave their maximum bid 24 hours before the auction begins. Mideast Equipment Auctions reserves the right to withdraw or re-catalog items in this auction.

Purchases must be removed from the sale site within 7 days of the sale date. Loading will be on Monday through Saturday from 8:00 AM to 4:00 PM, and if applicable, Sundays from 8:00 AM to 11:00 AM. Any equipment remaining on the grounds after 7 days will be subject to storage fees or removed at the buyer’s expense. Items left after 45 days will be considered abandoned and revert back to seller. Shipping arrangements and cost are the BUYERS SOLE RESPONSIBILITY. Currency Type: USD
Shipping Instructions: Please contact the auction company for general shipping and handling information.

Preview Date & Times: Items are available for preview and inspection from Thursday October 12th & Friday October 13th, between 9am and 4pm.

Checkout Date & Times: Please contact the auction company for checkout dates & times.

Location: 1170 East Main Street Vernal, UT 84078

Special Terms

**Items picked up in or delivered to the state of UT will be subject to UT State and Local Sales Tax of 6.95%. **

**Please Note: WE WILL NOT BE COLLECTING MOTOR VEHICLE SALES TAX FOR TITLED VEHICLES, BUYERS RESPONSIBLE TO PAY MOTOR VEHICLE TAXES IN THEIR RESPECTIVE STATES. **

Payment is due within 3 days of the close of the auction – wire transfer, credit card and “Good Company Check” accompanied by current “Bank Letter of Guarantee”, made payable to “Mideast Equipment Auctions”. Please note that credit card and check payments will have an additional 4% fee added to the invoice total. No equipment will be released until payment is made in full. All equipment is sold “As Is, Where Is” with no guarantees implied or expressed. Year models, hour meter readings and descriptions are known to be accurate to the best of our knowledge with no guarantee implied or expressed. Inspection prior to bidding is recommended and available prior to auction – please call to set up an appointment. Buyer is responsible for all freight, handling costs, and taxes where applicable. All sales are final. Call with any questions regarding this auction before placing a bid.

Auctioneer, Auctioneers agents or assigns assume no responsibility for the quality, presence or absence at or on the day of auction. Descriptions are not guaranteed. This includes but not limited to, make, model, hours showing, miles shown, year of manufacture, horsepower rating, remarks concerning specific condition of merchandise and/or merchantability for a particular purpose.

If any dispute arises between two or more bidders, the auctioneer has the right in its sole and absolute discretion to determine the winning bidder or to re-offer and resell the item or lot in dispute. Mideast Equipment Auctions shall have no liability arising from any dispute between two bidders. Mideast Equipment Auctions reserves the right to group one or more lots into one or more selling items or lots, or to add to or delete items or lots at its sole discretion. Mideast Equipment Auctions reserves the right to set the bidding increments. Mideast Equipment Auctions also reserves the right to reject any bid which is only a fractional advance over the preceding bid. Mideast Equipment Auctions, or the owners, reserves the right to set and/or to modify a minimum price.